

Scaled data based on original data using
LM-79-08 Approved Method: Electrical and Photometric Measurements of Solid-
State Lighting Products

Test Report Prepared for
Cooper Lighting Solutions
(formerly Eaton)

Brand: STREETWORKS

Report Number: P236755

Luminaire Tested: **ARCH-L-AF72-220-D-U-5WQ-7050**

Issue Date: 2/14/2018

Test Information

Test Method: LM-79-08
Report Number: P236755
TEST IS SCALED FROM IESNA LM-79-08 TEST DATA (P29597)
Test Lab: INNOVATION CENTER-P2
Issue Date: 2/14/2018
Manufacturer: COOPER LIGHTING SOLUTIONS (FORMERLY EATON)
Product Line: STREETWORKS
Catalog Number: ARCH-L-AF72-220-D-U-5WQ-7050
Description: ARCHEON-L ROADWAY AND AREA LUMINAIRE
(3) 70 CRI, 5000K, 945mA LIGHT ENGINES WITH 24 LEDS AND TYPE V WIDE OPTICS
Light Source: -
Ballast/Driver: ELECTRONIC DRIVER

Summary

Lumens per Lamp: N/A
Luminaire Lumens: 26857 lumens
Efficiency: N/A
Efficacy: 121.0 lumens/watt
Luminous Opening: Rectangular (W 0.75' x L: 1.5' x H: 0')
IES Classification: Type V - Short
BUG Rating: B5 - U0 - G4

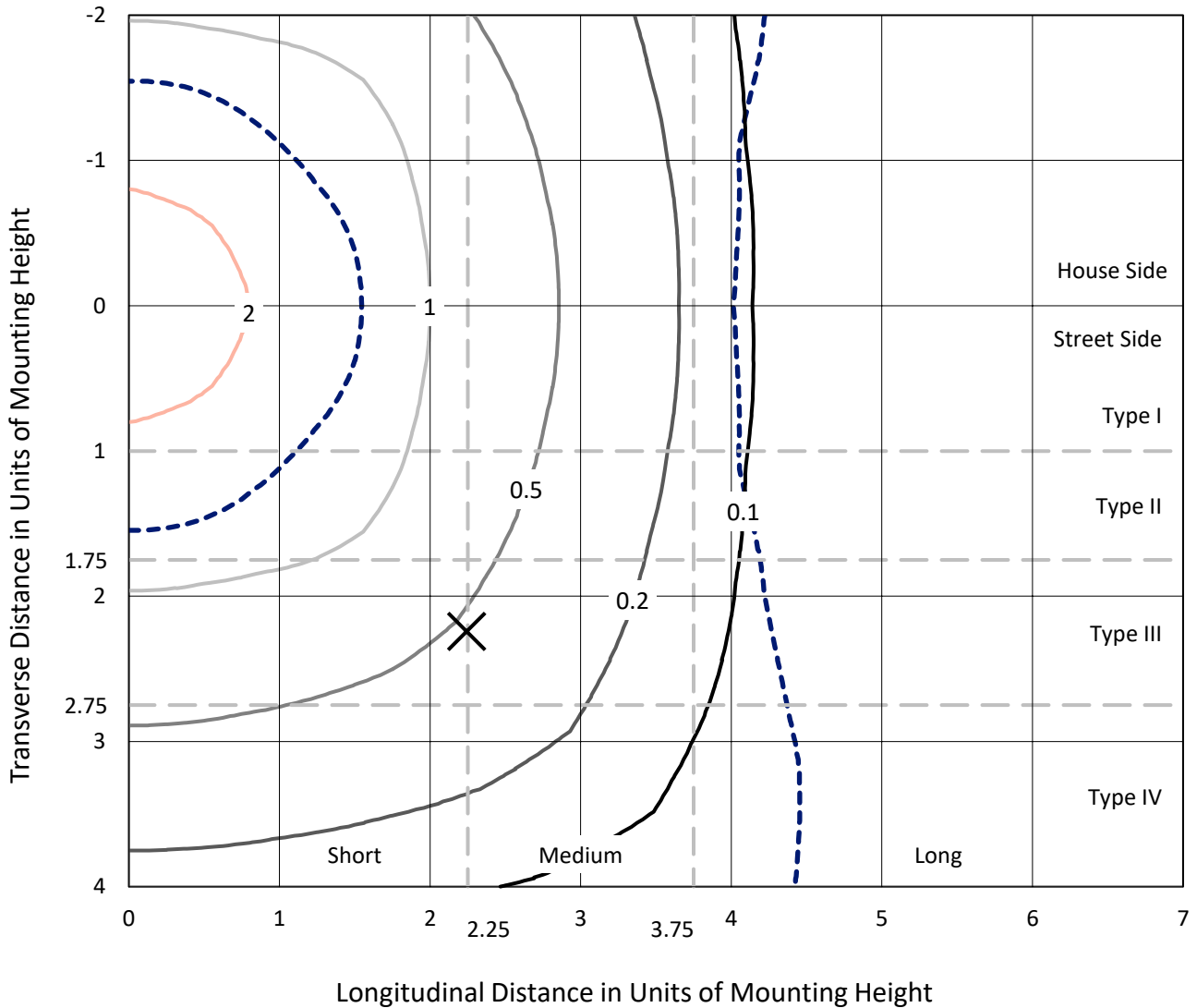
Input Watts (W): 222
Input Voltage (V): NR
Input Current (Ain): NR
Voltage Rise (V): NR
Power Factor: NR
Total Harmonic Distortion (THDi): NR
Frequency (hertz): 60
Stabilization Time: NR
Operation Time: NR
Ambient Temperature (°C): NR
Test Distance: 24 FT



REPORT NUMBER: P236755
 CATALOG NUMBER: ARCH-L-AF72-220-D-U-5WQ-7050

Iso-Footcandle Lines of Horizontal Illumination

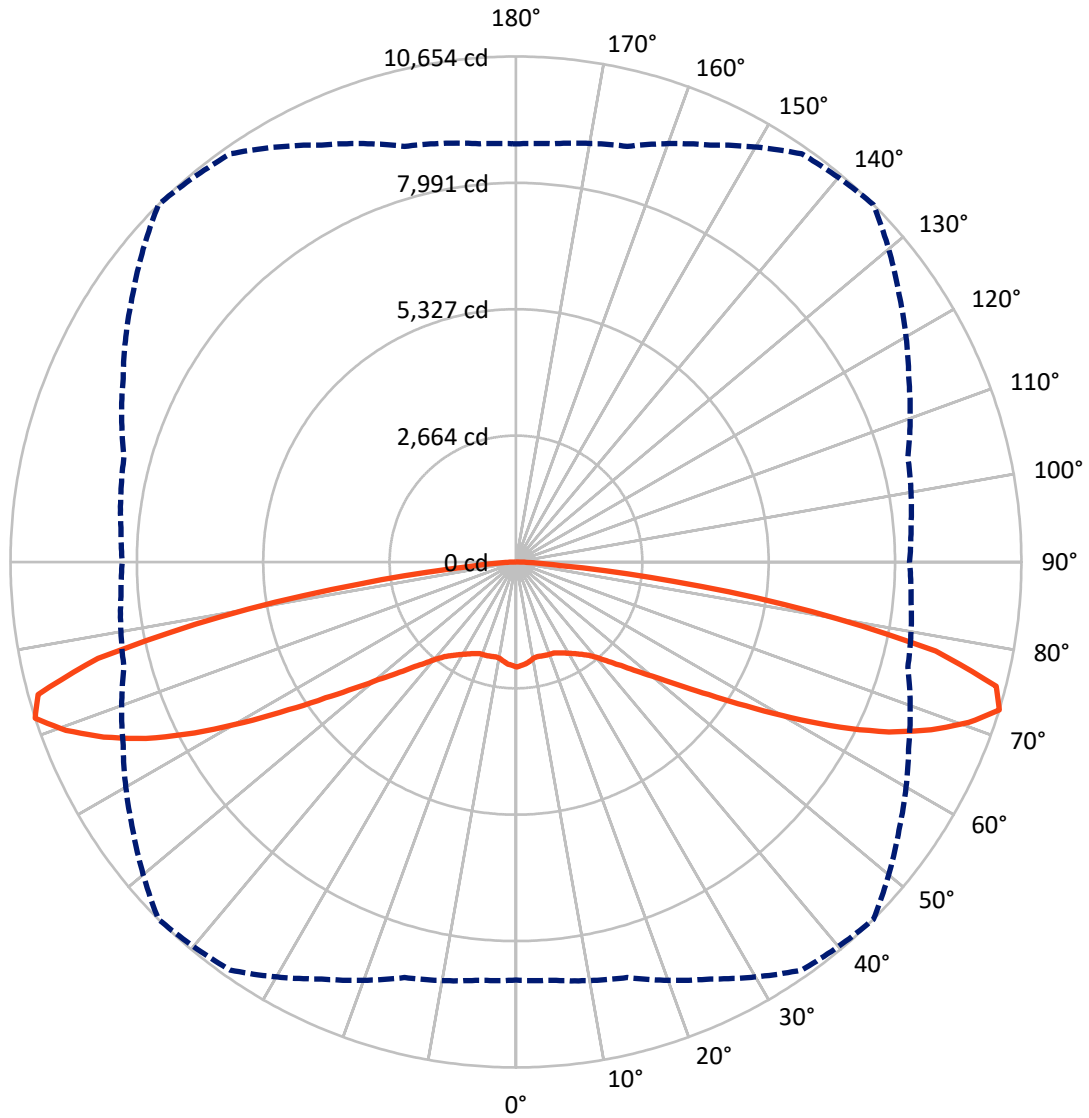
✕ Max cd
 - - - 1/2 Max cd



Based on 25 foot mounting height. Maximum calculated value = 3.5 fc
 Type V - Short - N/A

REPORT NUMBER: P236755
CATALOG NUMBER: ARCH-L-AF72-220-D-U-5WQ-7050

Luminous Intensity Polar Plot



— Vertical Plane Through 45-Deg Lateral - - - Horizontal Cone Through 72.5-Deg Vertical

REPORT NUMBER: P236755
 CATALOG NUMBER: ARCH-L-AF72-220-D-U-5WQ-7050

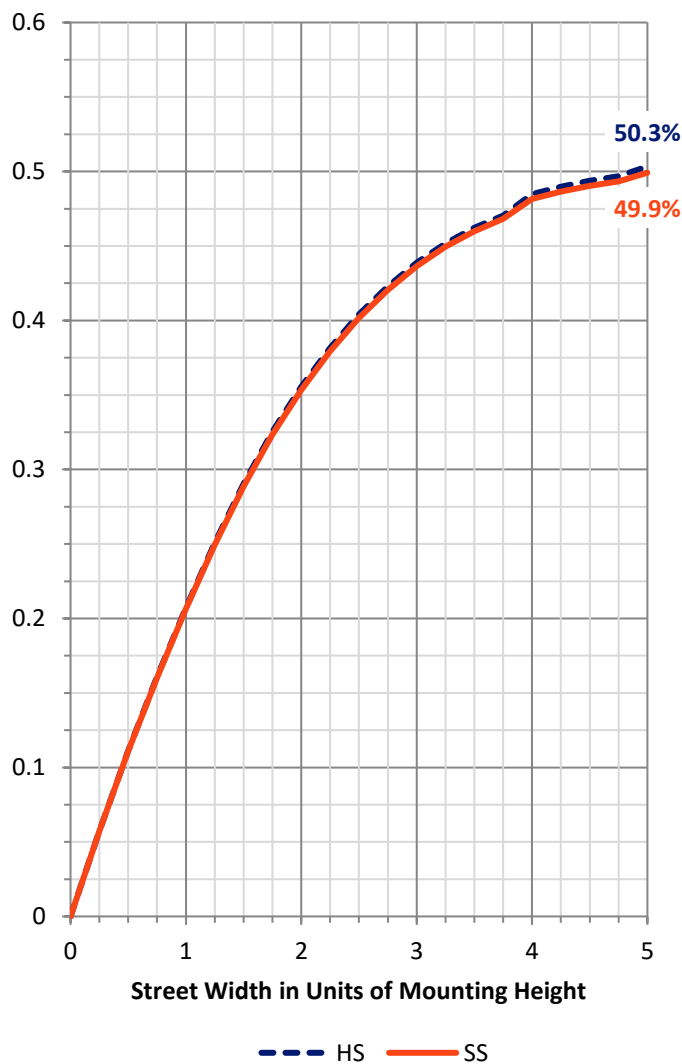
FLUX DISTRIBUTION:

		Downward	Upward	Total
House Side	Lumens	13428.5	0.0	13428.5
	% Fixture	50.0	0.0	50.0
Street Side	Lumens	13428.5	0.0	13428.5
	% Fixture	50.0	0.0	50.0
Total	Lumens	26857.0	0.0	26857.0
	% Fixture	100.0	0.0	100.0

Coefficient of Utilization

ZONAL LUMENS:

Zone	Lumens	% Fixture
0°-10°	203.7	0.8
10°-20°	587.7	2.2
20°-30°	983.5	3.7
30°-40°	1511.1	5.6
40°-50°	2502.0	9.3
50°-60°	4448.1	16.6
60°-70°	7781.8	29.0
70°-80°	7917.3	29.5
80°-90°	921.9	3.4
90°-100°	0.0	0.0
100°-110°	0.0	0.0
110°-120°	0.0	0.0
120°-130°	0.0	0.0
130°-140°	0.0	0.0
140°-150°	0.0	0.0
150°-160°	0.0	0.0
160°-170°	0.0	0.0
170°-180°	0.0	0.0
0°-90°	26857.0	100.0
0°-180°	26857.0	100.0

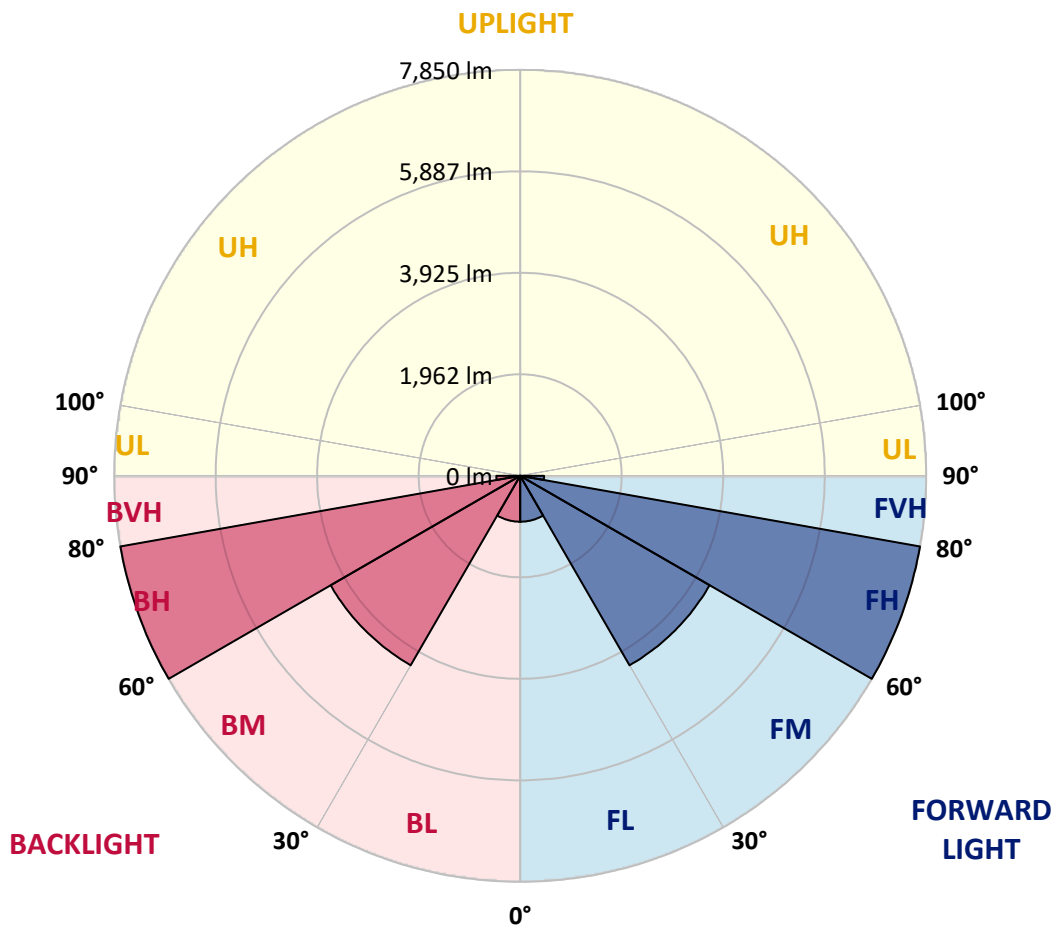


REPORT NUMBER: P236755
 CATALOG NUMBER: ARCH-L-AF72-220-D-U-5WQ-7050

LUMINAIRE CLASSIFICATION SYSTEM LUMEN TABLE AND BUG RATING:

Zone	Lumens	% Fixture	Zone Rating/Lumen Limit		
			B	U	G
FL (0°-30°)	887.4	3.3			
FM (30°-60°)	4230.6	15.8			
FH (60°-80°)	7849.6	29.2			G4/12000
FVH (80°-90°)	461.0	1.7			G3/500
BL (0°-30°)	887.4	3.3	B2/1000		
BM (30°-60°)	4230.6	15.8	B3/5000		
BH (60°-80°)	7849.6	29.2	B5		G4/12000
BVH (80°-90°)	461.0	1.7			G3/500
UL (90°-100°)	0.0	0.0		U0/0	
UH (100°-180°)	0.0	0.0		U0/0	

BUG Rating: B5-U0-G4
 Type V Short





REPORT NUMBER: P236755

CATALOG NUMBER: ARCH-L-AF72-220-D-U-5WQ-7050

CANDELA DISTRIBUTION (FULL):

	0°	5°	15°	25°	35°	45°	55°	65°	75°	85°	90°
0°	2213.6	2213.6	2213.6	2213.6	2213.6	2213.6	2213.6	2213.6	2213.6	2213.6	2213.6
2.5°	2193.2	2198.3	2188.1	2188.1	2188.1	2183.0	2188.1	2183.0	2188.1	2193.2	2193.2
5°	2172.7	2172.7	2162.5	2162.5	2162.5	2157.4	2162.5	2162.5	2167.6	2172.7	2172.7
7.5°	2126.7	2126.7	2121.6	2116.5	2111.4	2111.4	2116.5	2116.5	2121.6	2126.7	2126.7
10°	2101.2	2096.1	2085.8	2070.5	2065.4	2060.3	2070.5	2080.7	2096.1	2111.4	2106.3
12.5°	2090.9	2085.8	2065.4	2050.0	2039.8	2044.9	2055.2	2065.4	2090.9	2106.3	2101.2
15°	2101.2	2090.9	2065.4	2039.8	2044.9	2055.2	2065.4	2065.4	2096.1	2111.4	2111.4
17.5°	2101.2	2096.1	2065.4	2044.9	2050.0	2070.5	2070.5	2065.4	2090.9	2116.5	2116.5
20°	2106.3	2106.3	2065.4	2050.0	2055.2	2070.5	2075.6	2070.5	2090.9	2121.6	2121.6
22.5°	2116.5	2111.4	2070.5	2060.3	2070.5	2080.7	2085.8	2080.7	2101.2	2126.7	2131.8
25°	2137.0	2126.7	2090.9	2085.8	2106.3	2121.6	2121.6	2111.4	2121.6	2147.2	2147.2
27.5°	2162.5	2157.4	2116.5	2116.5	2142.1	2172.7	2157.4	2137.0	2147.2	2172.7	2172.7
30°	2208.5	2203.4	2162.5	2162.5	2198.3	2234.1	2198.3	2172.7	2188.1	2213.6	2218.8
32.5°	2275.0	2275.0	2239.2	2229.0	2290.3	2305.7	2290.3	2239.2	2249.4	2285.2	2285.2
35°	2387.5	2377.2	2341.4	2336.3	2397.7	2392.6	2387.5	2341.4	2351.7	2392.6	2392.6
37.5°	2535.7	2530.6	2499.9	2484.6	2515.3	2494.8	2505.0	2484.6	2510.2	2540.8	2545.9
40°	2724.9	2719.8	2694.2	2673.8	2684.0	2653.3	2663.5	2673.8	2699.3	2719.8	2724.9
42.5°	2960.0	2960.0	2934.5	2898.7	2883.4	2868.0	2868.0	2888.5	2914.0	2939.6	2939.6
45°	3251.4	3251.4	3220.8	3185.0	3139.0	3113.4	3123.6	3144.1	3174.8	3205.4	3215.7
47.5°	3594.0	3594.0	3553.1	3517.3	3471.3	3440.6	3440.6	3450.8	3496.8	3522.4	3537.7
50°	3977.4	3962.1	3921.2	3885.4	3859.8	3818.9	3824.0	3818.9	3859.8	3895.6	3905.8
52.5°	4376.2	4371.0	4330.1	4319.9	4335.3	4314.8	4314.8	4263.7	4279.0	4299.5	4294.4
55°	4872.1	4856.7	4820.9	4841.4	4902.7	4933.4	4923.2	4841.4	4795.4	4805.6	4800.5
57.5°	5414.0	5398.6	5388.4	5449.7	5587.8	5715.6	5690.0	5500.9	5414.0	5419.1	5424.2
60°	5966.1	5966.1	5996.8	6150.1	6446.7	6656.3	6579.6	6262.6	6109.2	6078.6	6068.3
62.5°	6533.6	6548.9	6615.4	6871.0	7326.0	7673.6	7479.3	7029.5	6799.4	6738.1	6717.6
65°	7193.1	7208.4	7305.5	7622.5	8225.7	8639.8	8307.5	7883.2	7561.1	7433.3	7412.9
67.5°	8149.1	8159.3	8236.0	8542.7	9110.2	9442.5	9100.0	8721.6	8374.0	8225.7	8215.5
70°	9007.9	9018.2	9084.6	9488.5	10010.0	10127.5	9749.2	9268.7	8905.7	8788.1	8767.7
72.5°	8813.7	8849.5	9069.3	9698.1	10500.7	10654.1	9856.6	9135.7	8552.9	8358.7	8297.3
75°	7392.4	7448.7	7796.3	8742.1	10020.2	10454.7	9222.7	7898.6	7029.5	6656.3	6559.1
77.5°	4314.8	4524.4	5122.6	6334.2	8159.3	9043.7	7596.9	5782.1	4319.9	3706.4	3501.9
80°	1180.9	1293.4	1728.0	2914.0	5117.4	6334.2	4846.5	2653.3	1431.5	1073.6	996.9
82.5°	373.2	495.9	628.8	838.4	2009.1	3338.4	1799.5	782.2	613.5	506.1	449.9
85°	199.4	214.7	352.8	409.0	603.3	935.6	557.2	409.0	368.1	271.0	255.6
87.5°	102.2	107.4	199.4	199.4	265.8	219.8	240.3	219.8	209.6	132.9	117.6
90°	0.0	0.0	0.0	0.0	0.0	0.0	0.0	0.0	0.0	0.0	0.0

(END OF REPORT)